

FOR SALE

2 Single-Family Detached Lots

Hays Farm Subdivision
Marietta (Cobb County), Georgia

For more information,
please contact:

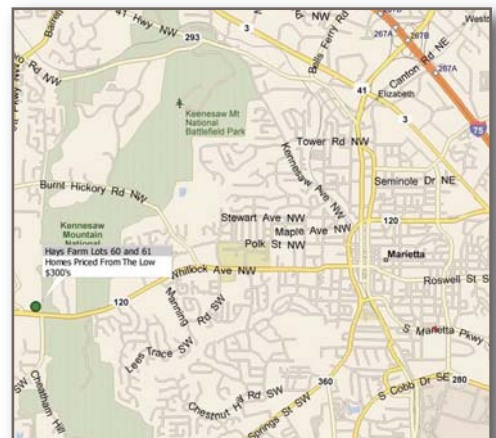
Nelson Vinson
404.925.0995
nrv@mcwrealty.com

**McWhirter Realty
Partners**
4045 Orchard Road
Building 400
Smyrna, GA 30080

www.mcwrealty.com



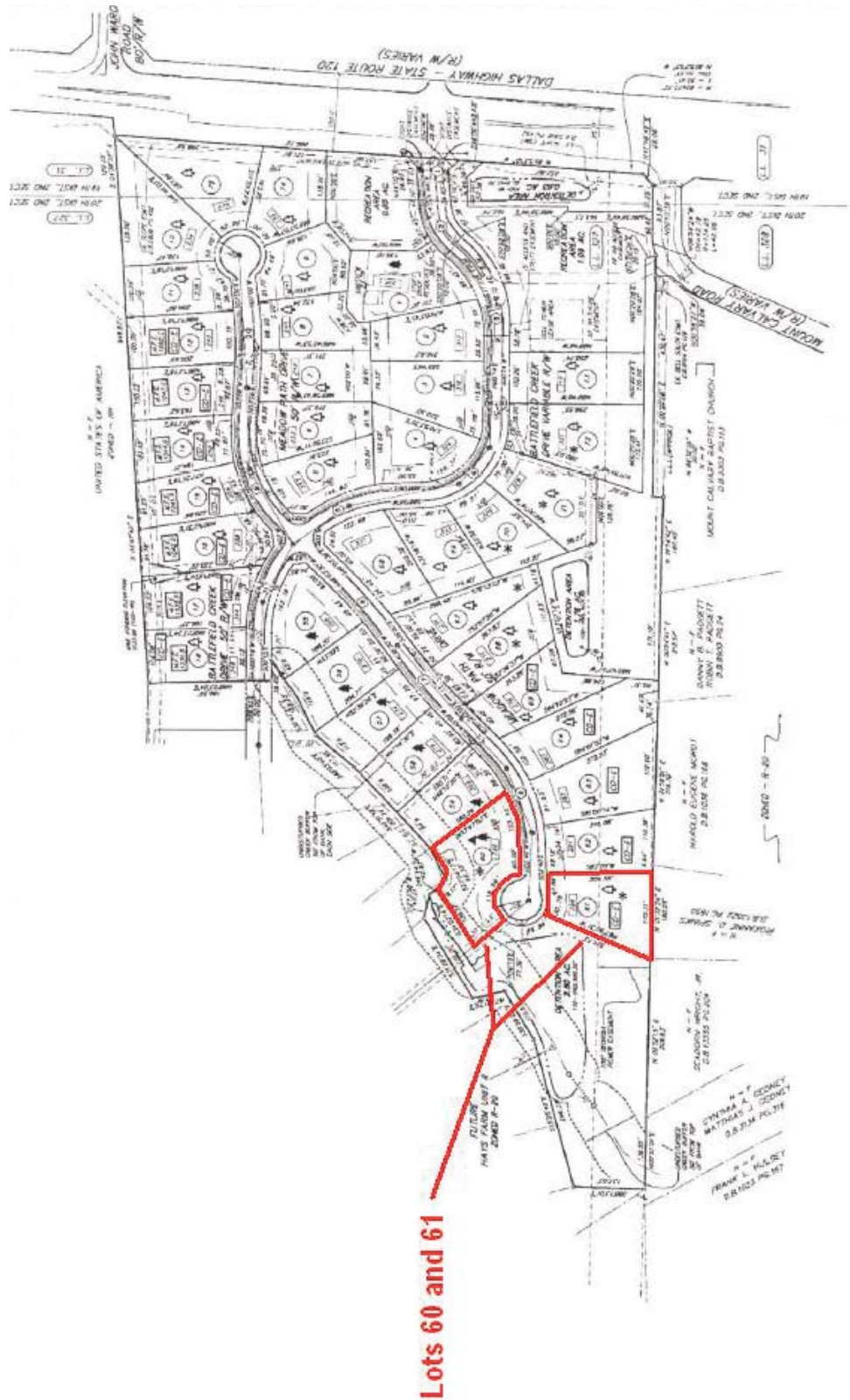
- 2 Single-Family Detached Lots in Hays Farm Subdivision
- Zoned R-20
- Setbacks: 35' Front, 10' Side, 35' Rear
- Located 3 miles West of Marietta Square
- Adjoins Kennesaw Mountain National Battlefield Park
- Priced at \$140,000 (\$70,000 per lot)



No warranty or representation, express or implied, is made as to the accuracy of the information contained herein, and same is subject to errors, omissions, change of price, rental or other conditions, withdrawal without notice, and to any special listing conditions, imposed by our principals.



Hays Farm Subdivision
Marietta (Cobb County), Georgia



For more information,
please contact:

Nelson Vinson
404.925.0995
nrv@mcwrealty.com

**McWhirter Realty
Partners**
4045 Orchard Road
Building 400
Smyrna, GA 30080

www.mcwrealty.com



No warranty or representation, express or implied, is made as to the accuracy of the information contained herein, and same is subject to errors, omissions, change of price, rental or other conditions, withdrawal without notice, and to any special listing conditions, imposed by our principals.